

Measure #130 (NQF 0419): Documentation of Current Medications in the Medical Record – National Quality Strategy Domain: Patient Safety

2017 OPTIONS FOR INDIVIDUAL MEASURES:
REGISTRY ONLY

MEASURE TYPE:
Process

DESCRIPTION:

Percentage of visits for patients aged 18 years and older for which the eligible clinician attests to documenting a list of current medications using all immediate resources available on the date of the encounter. This list must include ALL known prescriptions, over-the-counters, herbals, and vitamin/mineral/dietary (nutritional) supplements AND must contain the medications' name, dosage, frequency and route of administration

INSTRUCTIONS:

This measure is to be reported at each denominator eligible visit during the 12 month performance period. Eligible clinicians meet the intent of this measure by making their best effort to document a current, complete and accurate medication list during each encounter. There is no diagnosis associated with this measure. This measure may be reported by eligible clinicians who perform the quality actions described in the measure based on the services provided and the measure-specific denominator coding.

Measure Reporting:

The listed denominator criteria is used to identify the intended patient population. The numerator options included in this specification are used to submit the quality actions allowed by the measure. The quality-data codes listed do not need to be submitted for registry-based submissions; however, these codes may be submitted for those registries that utilize claims data.

DENOMINATOR:

All visits for patients aged 18 years and older

Denominator Criteria (Eligible Cases):

Patients aged \geq 18 years on date of encounter

AND

Patient encounter during the **performance period** (CPT or HCPCS): 90791, 90792, 90832, 90834, 90837, 90839, 92002, 92004, 92012, 92014, 92507, 92508, 92526, 92537, 92538, 92540, 92541, 92542, 92544, 92545, 92547, 92548, 92550, 92557, 92567, 92568, 92570, 92585, 92588, 92626, 96116, 96150, 96151, 96152, 97161, 97162, 97163, 97164, 97165, 97166, 97167, 97168, 97532, 97802, 97803, 97804, 98960, 98961, 98962, 99201, 99202, 99203, 99204, 99205, 99212, 99213, 99214, 99215, 99221, 99222, 99223, 99324, 99325, 99326, 99327, 99328, 99334, 99335, 99336, 99337, 99341, 99342, 99343, 99344, 99345, 99347, 99348, 99349, 99350, 99495, 99496, G0101, G0108, G0270, G0402, G0438, G0439

NUMERATOR:

Eligible clinician attests to documenting, updating or reviewing a patient's current medications using all resources available on the date of encounter. This list must include ALL known prescriptions, over-the counters, herbals, and vitamin/mineral/dietary (nutritional) supplements AND must contain the medications' name, dosages, frequency and route of administration

Definitions:

Current Medications – Medications the patient is presently taking including all prescriptions, over-the-counters, herbals and vitamin/mineral/dietary (nutritional) supplements with each medication's name, dosage, frequency and administered route.

Route – Documentation of the way the medication enters the body (some examples include but are not limited to: oral, sublingual, subcutaneous injections, and/or topical)

Not Eligible (Denominator Exception) – A patient is not eligible if the following reason is documented:

- Patient is in an urgent or emergent medical situation where time is of the essence and to delay treatment would jeopardize the patient's health status

NUMERATOR NOTE: The eligible clinician must document in the medical record they obtained, updated, or reviewed a medication list on the date of the encounter. Eligible clinicians reporting this measure may document medication information received from the patient, authorized representative(s), caregiver(s) or other available healthcare resources. G8427 should be reported if the eligible clinician documented that the patient is not currently taking any medications

Numerator Options:

Performance Met:

Eligible clinician attests to documenting in the medical record they obtained, updated, or reviewed the patient's current medications (G8427)

OR

Denominator Exception:

Eligible clinician attests to documenting in the medical record the patient is not eligible for a current list of medications being obtained, updated, or reviewed by the eligible clinician (G8430)

OR

Performance Not Met:

Current list of medications not documented as obtained, updated, or reviewed by the eligible clinician, reason not given (G8428)

RATIONALE:

Maintaining an accurate and complete medication list has proven to be a challenging documentation endeavor for various health care provider settings. While most of outpatient encounters (2/3) result in providers prescribing at least one medication, hospitals have been the focus of medication safety efforts (Stock et al., 2009). Nassaralla et al. (2007) caution that this is at odds with the current trend, where patients with chronic illnesses are increasingly being treated in the outpatient setting and require careful monitoring of multiple medications. Additionally Nassaralla et al. (2007) reveal that it is in fact in outpatient settings where more fatal adverse drug events (ADE) occur when these are compared to those occurring in hospitals (1 of 131 outpatient deaths compared to 1 in 854 inpatient deaths). In the outpatient setting, adverse drug events (ADEs) occur 25% of the time and over one-third of these are considered preventable (Tache et al., 2011). Particularly vulnerable are patients over 65 years, with evidence suggesting that the rate of ADEs per 10,000 person per year increases with age; 25-44 years old at 1.3; 45-64 at 2.2, and 65 + at 3.8 (Sarkar et al., 2011). Another vulnerable group are chronically ill individuals. These population groups are more likely to experience ADEs and subsequent hospitalization.

A multiplicity of providers and inadequate care coordination among them has been identified as barriers to collecting complete and reliable medication records. Documentation of current medications in the medical record facilitates the process of medication review and reconciliation by the provider, which are necessary for reducing ADEs and promoting medication safety. The need for provider to provider coordination regarding medication records, and the existing gap in implementation, is highlighted in the American Medical Association's (AMA) Physician's Role in Medication Reconciliation (2007), which states that "critical patient information, including medical and medication histories, current medications the patient is receiving and taking, and sources of medications, is essential to the delivery of safe medical care. However, interruptions in the continuity of care and information gaps in patient health records are common and significantly affect patient outcomes" (p.7). This is because clinical decisions based on information that is incomplete and/or inaccurate are likely to lead to medication error and ADEs. Weeks et al. (2010) noted similar barriers and identified the utilization of health information technology as an opportunity for facilitating the creation of universal medication lists.

CLINICAL RECOMMENDATION STATEMENTS:

The Joint Commission's 2015 Ambulatory Care National Patient Safety Goals guide providers to maintain and communicate accurate patient medication information. Specifically, the section "Use Medicines Safely NPSG.03.06.01" states the following: "Maintain and communicate accurate patient medication information. The types of information that clinicians use to reconcile medications include (among others) medication name, dose, frequency, route, and purpose. Organizations should identify the information that needs to be collected to reconcile current and newly ordered medications and to safely prescribe medications in the future." (Joint Commission, 2015, retrieved at: http://www.jointcommission.org/assets/1/6/2015_NPSG_AHC1.PDF).

The National Quality Forum's 2010 update of the Safe Practices for Better Healthcare, states healthcare organizations must develop, reconcile, and communicate an accurate patient medication list throughout the continuum of care (p. 40).

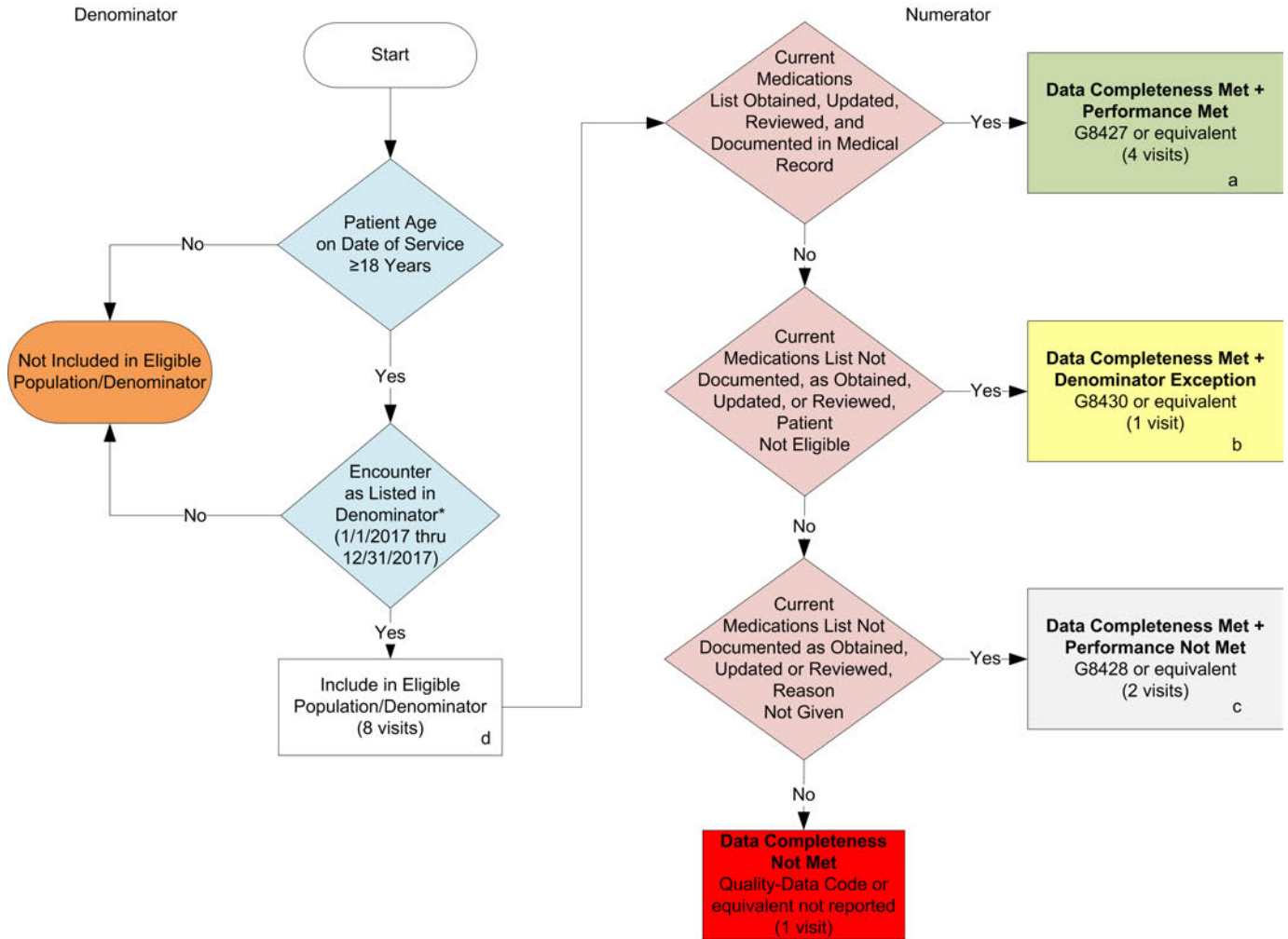
COPYRIGHT:

These measures were developed by Quality Insights of Pennsylvania as a special project under the Quality Insights' Medicare Quality Improvement Organization (QIO) contract HHSM-500-2005-PA001C with the Centers for Medicare & Medicaid Services. These measures are in the public domain.

Limited proprietary coding is contained in the measure specifications for convenience. Users of the proprietary code sets should obtain all necessary licenses from the owners of these code sets. Quality Insights of Pennsylvania disclaims all liability for use or accuracy of any Current Procedural Terminology (CPT [R]) or other coding contained in the specifications. CPT® contained in the Measures specifications is copyright 2004- 2016 American Medical Association. All Rights Reserved. These performance measures are not clinical guidelines and do not establish a standard of medical care, and have not been tested for all potential applications.

THE MEASURES AND SPECIFICATIONS ARE PROVIDED "AS IS" WITHOUT WARRANTY OF ANY KIND.

2017 Registry Individual Measure Flow
#130 NQF #0419: Documentation of Current Medications in the Medical Record



SAMPLE CALCULATIONS:

Data Completeness=

$$\frac{\text{Performance Met (a=4 visits)} + \text{Denominator Exception (b=1 visit)} + \text{Performance Not Met (c=2 visits)}}{\text{Eligible Population / Denominator (d=8 visits)}} = \frac{7 \text{ visits}}{8 \text{ visits}} = 87.50\%$$

Performance Rate=

$$\frac{\text{Performance Met (a=4 visits)}}{\text{Data Completeness Numerator (7 visits) – Denominator Exception (b=1 visit)}} = \frac{4 \text{ visits}}{6 \text{ visits}} = 66.67\%$$

*See the posted Measure Specification for specific coding and instructions to report this measure.

NOTE: Reporting Frequency: Visit

CPT only copyright 2016 American Medical Association. All rights reserved.
 The measure diagrams were developed by CMS as a supplemental resource to be used in conjunction with the measure specifications. They should not be used alone or as a substitution for the measure specification.

v1

2017 Registry Individual Measure Flow

#130 NQF #0419: Documentation of Current Medications in the Medical Record

Please refer to the specific section of the Measure Specification to identify the denominator and numerator information for use in reporting this Individual Measure.

1. Start with Denominator
2. Check Patient Age:
 - a. If the Age is greater than or equal to 18 years of age at Date of Service equals No during the measurement period, do not include in Eligible Patient Population. Stop Processing.
 - b. If the Age is greater than or equal to 18 years of age at Date of Service equals Yes during the measurement period, proceed to Check Encounter Performed.
3. Check Encounter Performed:
 - a. If Encounter as Listed in the Denominator equals No, do not include in Eligible Patient Population. Stop Processing.
 - b. If Encounter as Listed in the Denominator equals Yes, include in the Eligible population.
4. Denominator Population:
 - a. Denominator population is all Eligible Patients in the denominator. Denominator is represented as Denominator in the Sample Calculation listed at the end of this document. Letter d equals 8 visits in the sample calculation.
5. Start Numerator
6. Check Current Medications List Obtained, Updated, Reviewed and Documented in Medical Record:
 - a. If Current Medications List Obtained, Updated, Reviewed and Documented in Medical Record equals Yes, include in Data Completeness Met and Performance Met.
 - b. Data Completeness Met and Performance Met letter is represented as Data Completeness and Performance Rate in the Sample Calculation listed at the end of this document. Letter a equals 4 visits in Sample Calculation.
 - c. If Current Medications List Obtained, Updated, Reviewed and Documented in Medical Record equals No, proceed to Check Current Medications List Not Documented as Obtained, Updated or Reviewed, Patient Not Eligible.
7. Check Current Medications List Not Documented as Obtained, Updated or Reviewed, Patient Not Eligible:
 - a. If Current Medications List Not Documented as Obtained, Updated or Reviewed, Patient Not Eligible equals Yes, include in Data Completeness Met and Denominator Exception.
 - b. Data Completeness Met and Denominator Exception letter is represented as Data Completeness and Performance Rate in the Sample Calculation listed at the end of this document. Letter b equals 1 visit in Sample Calculation.
 - c. If Current Medications List Not Documented as Obtained, Updated or Reviewed, Patient Not Eligible equals No, proceed to Check Current Medications List Not Documented as Obtained, Updated or Reviewed, Reason Not Given.
8. Check Current Medications List Not Documented as Obtained, Updated or Reviewed, Reason Not Given:
 - a. If Current Medications List Not Documented as Obtained, Updated or Reviewed, Reason Not Given equals Yes, include in Data Completeness Met and Performance Not Met.

- b. Data Completeness Met and Performance Not Met letter is represented as Data Completeness in the Sample Calculation listed at the end of this document. Letter c equals 2 visits in the Sample Calculation.
 - c. If Current Medications List Not Documented as Obtained, Updated or Reviewed, Reason Not Given equals No, proceed to Check Data Completeness Not Met.
9. Check Data Completeness Not Met:
- a. If Data Completeness Not Met, the Quality Data Code or equivalent was not reported. 1 visit has been subtracted from the data completeness numerator in the sample calculation.

SAMPLE CALCULATIONS:

Data Completeness=

$$\frac{\text{Performance Met (a=4 visits) + Denominator Exception (b=1 visit) + Performance Not Met (c=2 visits)}}{\text{Eligible Population / Denominator (d=8 visits)}} = \frac{7 \text{ visits}}{8 \text{ visits}} = 87.50\%$$

Performance Rate=

$$\frac{\text{Performance Met (a=4 visits)}}{\text{Data Completeness Numerator (7 visits) – Denominator Exception (b=1 visit)}} = \frac{4 \text{ visits}}{6 \text{ visits}} = 66.67\%$$