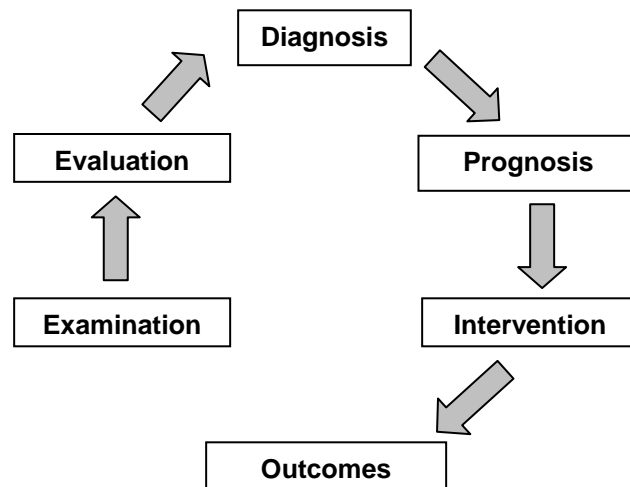


Problem Solving Algorithm Utilized by PTAs in Patient/Client Intervention

This algorithm, developed by APTA's Departments of Education, Accreditation, and Practice, is intended to reflect current policies and positions on the problem solving processes utilized by physical therapist assistants in the provision of selected interventions. The controlling assumptions are essential to understanding and applying this algorithm. (This document can be found in *A Normative Model of Physical Therapist Assistant Education: Version 2007.*)

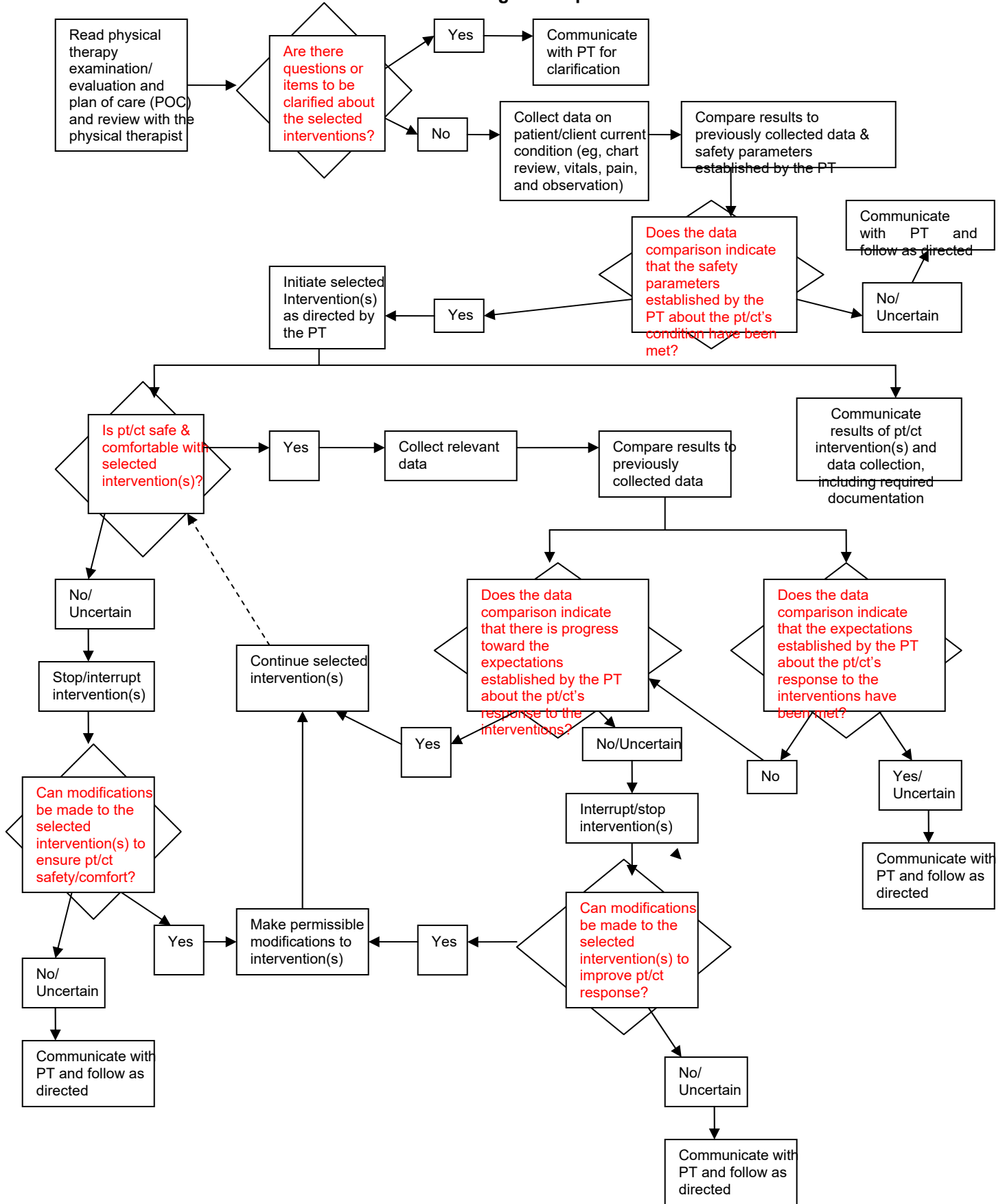
Controlling Assumptions



- The physical therapist integrates the five elements of patient/client management – examination, evaluation, diagnosis, prognosis, and intervention – in a manner designed to optimize outcomes. Responsibility for completion of the examination, evaluation, diagnosis, and prognosis is borne solely by the physical therapist. The physical therapist's plan of care may involve the physical therapist assistant to assist with selected interventions. This algorithm represents the decision making of the physical therapist assistant within the intervention element.
- The physical therapist will direct and supervise the physical therapist assistant consistent with APTA House of Delegates positions, including Direction and Supervision of the Physical Therapist Assistant (HOD P06-05-18-26); APTA core documents, including Standards of Ethical Conduct for the PTA; and federal and state legal practice standards; and institutional regulations.
- All selected interventions are directed and supervised by the physical therapist. Additionally, the physical therapist remains responsible for the physical therapy services provided when the physical therapist's plan of care involves the physical therapist assistant to assist with selected interventions.
- Selected intervention(s) includes the procedural intervention, associated data collection, and communication, including written documentation associated with the safe, effective, and efficient completion of the task.
- The algorithm may represent the thought processes involved in a patient/client interaction or episode of care. Entry into the algorithm will depend on the point at which the physical therapist assistant is directed by the physical therapist to provide selected interventions.
- Communication between the physical therapist and physical therapist assistant regarding patient/client care is ongoing. The algorithm does not intend to imply a limitation or restriction on communication between the physical therapist and physical therapist assistant.

Problem Solving Algorithm Utilized by PTAs in Patient/ Client Intervention

* See Controlling Assumptions*



1.13.2007