

Measure #126 (NQF 0417): Diabetes Mellitus: Diabetic Foot and Ankle Care, Peripheral Neuropathy – Neurological Evaluation – National Quality Strategy Domain: Effective Clinical Care

**2016 PQRS OPTIONS FOR INDIVIDUAL MEASURES:
REGISTRY ONLY**

DESCRIPTION:

Percentage of patients aged 18 years and older with a diagnosis of diabetes mellitus who had a neurological examination of their lower extremities within 12 months

INSTRUCTIONS:

This measure is to be reported a minimum of **once per reporting period** for patients with diabetes mellitus seen during the reporting period. Evaluation of neurological status in patients with diabetes to assign risk category and therefore have appropriate foot and ankle care to prevent ulcerations and infections ultimately reduces the number and severity of amputations that occur. Risk categorization and follow up treatment plan should be done according to the following table:

Table 1 - Risk Categorization System

Category	Risk Profile	Evaluation Frequency
0	Normal	Annual
1	Peripheral Neuropathy (LOPS)	Semi-annual
2	Neuropathy, deformity, and/or PAD	Quarterly
3	Previous ulcer or amputation	Monthly to quarterly

This measure may be reported by non-MD/DO clinicians who perform the quality actions described in the measure based on the services provided and the measure-specific denominator coding.

Measure Reporting via Registry:

ICD-10-CM diagnosis codes, CPT codes, and patient demographics are used to identify patients who are included in the measure's denominator. The listed numerator options are used to report the numerator of the measure.

The quality-data codes listed do not need to be submitted for registry-based submissions; however, these codes may be submitted for those registries that utilize claims data. There are no allowable performance exclusions for this measure.

DENOMINATOR:

All patients aged 18 years and older with a diagnosis of diabetes mellitus

Denominator Criteria (Eligible Cases):

Patients aged ≥ 18 years on date of encounter

AND

Diagnosis for diabetes (ICD-10-CM): E10.10, E10.11, E10.21, E10.22, E10.29, E10.311, E10.319, E10.321, E10.329, E10.331, E10.339, E10.341, E10.349, E10.351, E10.359, E10.36, E10.39, E10.40, E10.41, E10.42, E10.43, E10.44, E10.49, E10.51, E10.52, E10.59, E10.610, E10.618, E10.620, E10.621, E10.622, E10.628, E10.630, E10.638, E10.641, E10.649, E10.65, E10.69, E10.8, E10.9, E11.00, E11.01, E11.21, E11.22, E11.29, E11.311, E11.319, E11.321, E11.329, E11.331, E11.339, E11.341, E11.349, E11.351, E11.359, E11.36, E11.39, E11.40, E11.41, E11.42, E11.43, E11.44, E11.49, E11.51, E11.52, E11.59, E11.610, E11.618, E11.620, E11.621, E11.622, E11.628, E11.630, E11.638, E11.641, E11.649, E11.65, E11.69, E11.8, E11.9, E13.00, E13.01, E13.10, E13.11, E13.21, E13.22, E13.29, E13.311, E13.319, E13.321, E13.329, E13.331, E13.339, E13.341, E13.349, E13.351, E13.359, E13.36, E13.39, E13.40, E13.41, E13.42, E13.43, E13.44, E13.49, E13.51, E13.52, E13.59, E13.610, E13.618, E13.620, E13.621, E13.622, E13.628, E13.630, E13.638, E13.641, E13.649, E13.65, E13.69, E13.8, E13.9

AND

Patient encounter during the reporting period (CPT): 11042, 11043, 11044, 11055, 11056, 11057, 11719, 11720, 11721, 11730, 11740, 97001, 97002, 97597, 97598, 97802, 97803, 99201, 99202, 99203, 99204, 99205, 99212, 99213, 99214, 99215, 99304, 99305, 99306, 99307, 99308, 99309, 99310, 99324, 99325, 99326, 99327, 99328, 99334, 99335, 99336, 99337, 99341, 99342, 99343, 99344, 99345, 99347, 99348, 99349, 99350

AND NOT

Clinician documented that patient was not an eligible candidate for lower extremity neurological exam measure, for example patient bilateral amputee, patient has condition that would not allow them to accurately respond to a neurological exam (dementia, Alzheimer's, etc.), patient has previously documented diabetic peripheral neuropathy with loss of protective sensation

NUMERATOR:

Patients who had a lower extremity neurological exam performed at least once within 12 months

Definition:

Lower Extremity Neurological Exam – Consists of a documented evaluation of motor and sensory abilities and should include: 10-g monofilament plus testing any one of the following: vibration using 128-Hz tuning fork, pinprick sensation, ankle reflexes, or vibration perception threshold), however the clinician should perform all necessary tests to make the proper evaluation.

Numerator Options:

Performance Met:

Lower extremity neurological exam performed and documented (**G8404**)

OR

Performance Not Met:

Lower extremity neurological exam not performed (**G8405**)

RATIONALE:

Foot ulceration is the most common single precursor to lower extremity amputations among persons with diabetes. Treatment of infected foot wounds accounts for up to one-quarter of all inpatient hospital admissions for people with diabetes in the United States. Peripheral sensory neuropathy in the absence of perceived trauma is the primary factor leading to diabetic foot ulcerations. Approximately 45-60% of all diabetic ulcerations are purely neuropathic. Other forms of neuropathy may also play a role in foot ulcerations. Motor neuropathy resulting in anterior crural muscle atrophy or intrinsic muscle wasting can lead to foot deformities such as foot drop, equinus, and hammertoes. In people with diabetes, 22.8% have foot problems – such as amputations and numbness – compared with 10% of nondiabetics. Over the age of 40 years old, 30% of people with diabetes have loss of sensation in their feet.

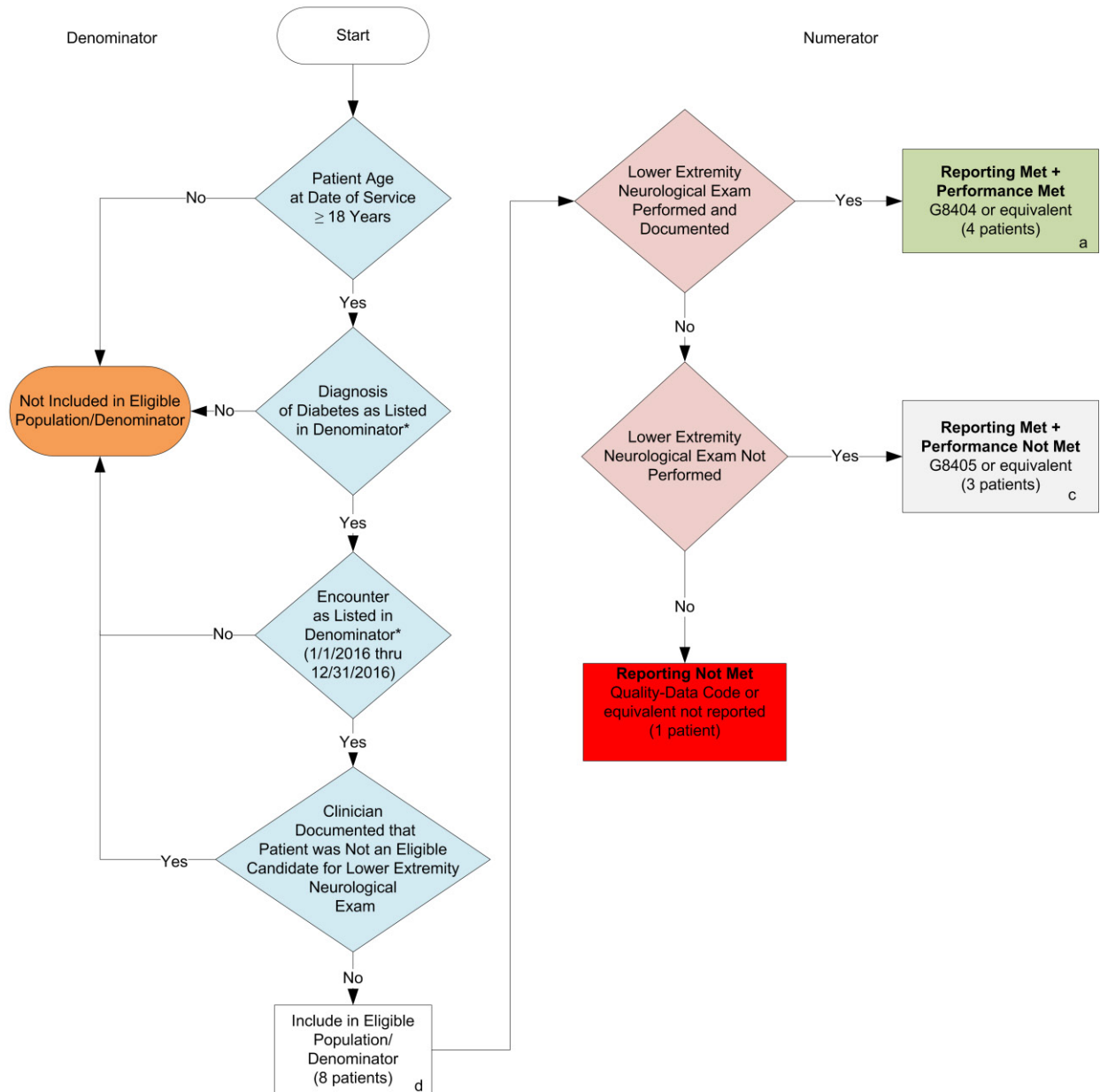
CLINICAL RECOMMENDATION STATEMENTS:

Recognizing important risk factors and making a logical, treatment-oriented assessment of the diabetic foot requires a consistent and thorough diagnostic approach using a common language. Without such a method, the practitioner is more likely to overlook vital information and to pay inordinate attention to less critical points in the evaluation. A useful examination will involve identification of key risk factors and assignment into appropriate risk category. Only then can an effective treatment plan be designed and implemented. (ACFAS/ACFAOM Clinical Practice Guidelines)

COPYRIGHT:

This measure is owned by the American Podiatric Medical Association (APMA).

2016 Registry Individual Measure Flow
PQRS #126 NQF #0417: Diabetes Mellitus: Diabetic Foot and Ankle Care, Peripheral Neuropathy – Neurological Evaluation



SAMPLE CALCULATIONS:

Reporting Rate=

$$\frac{\text{Performance Met (a=4 patients)} + \text{Performance Not Met (b=3 patients)}}{\text{Eligible Population / Denominator (d=8 patients)}} = \frac{7 \text{ patients}}{8 \text{ patients}} = 87.50\%$$

Performance Rate=

$$\frac{\text{Performance Met (a=4 patients)}}{\text{Reporting Numerator (7 patients)}} = \frac{4 \text{ patients}}{7 \text{ patients}} = 57.14\%$$

*See the posted Measure Specification for specific coding and instructions to report this measure.
 NOTE: Reporting Frequency: Patient-process

CPT only copyright 2015 American Medical Association. All rights reserved.
 The measure diagrams were developed by CMS as a supplemental resource to be used in conjunction with the measure specifications. They should not be used alone or as a substitution for the measure specification.

2016 Registry Individual Measure Flow
**PQRS #126 NQF #0417: Diabetes Mellitus: Diabetic Foot and Ankle Care Peripheral Neuropathy –
Neurological Evaluation**

Please refer to the specific section of the Measure Specification to identify the denominator and numerator information for use in reporting this Individual Measure.

1. Start with Denominator
2. Check Patient Age:
 - a. If the Age is greater than or equal to 18 years of age at Date of Service and equals No during the measurement period, do not include in Eligible Patient Population. Stop Processing.
 - b. If the Age is greater than or equal to 18 years of age at Date of Service and equals Yes during the measurement period, proceed to check Patient Diagnosis.
3. Check Patient Diagnosis:
 - a. If Diagnosis of Diabetes as Listed in the Denominator equals No, do not include in Eligible Patient Population. Stop Processing.
 - b. If Diagnosis of Diabetes as Listed in the Denominator equals Yes, proceed to check Encounter Performed.
4. Check Encounter Performed:
 - a. If Encounter as Listed in the Denominator equals No, do not include in Eligible Patient Population. Stop Processing.
 - b. If Encounter as Listed in the Denominator equals Yes, proceed to Clinician Documented That Patient Was Not an Eligible Candidate for Lower Extremity Neurological Exam.
5. Check Clinician Documented That Patient Was Not an Eligible Candidate for Lower Extremity Neurological Exam:
 - a. If Clinician Documented That Patient Was Not an Eligible Candidate for Lower Extremity Neurological Exam equals No, include in the Eligible population
 - b. If Clinician Documented That Patient Was Not an Eligible Candidate for Lower Extremity Neurological Exam equals Yes, do not include in Eligible patient Population. Stop Processing.
6. Denominator Population:
 - a. Denominator population is all Eligible Patients in the denominator. Denominator is represented as Denominator in the Sample Calculation listed at the end of this document. Letter d equals 8 patients in the sample calculation.
7. Start Numerator
8. Check Lower Extremity Neurological Exam Performed and Documented:
 - a. If Lower Extremity Neurological Exam Performed and Documented equals Yes, include in Reporting Met and Performance Met.

- b. Reporting Met and Performance Met letter is represented in the Reporting Rate and Performance Rate in the Sample Calculation listed at the end of this document. Letter a equals 4 patients in Sample Calculation.
 - c. If Lower Extremity Neurological Exam Performed and Documented equals No, proceed to Lower Extremity Neurological Exam Not Performed.
9. Check Lower Extremity Neurological Exam Not Performed:
- a. If Lower Extremity Neurological Exam Not Performed equals Yes, include in Reporting Met and Performance Not Met.
 - b. Reporting Met and Performance Not Met letter is represented in the Reporting Rate and Performance Rate in the Sample Calculation listed at the end of this document. Letter c equals 3 patients in the Sample Calculation.
 - c. If Lower Extremity Neurological Exam Not Performed equals No, proceed to Reporting Not Met.
10. Check Reporting Not Met:
- a. If Reporting Not Met equals No, Quality Data Code or equivalent not reported. 1 patient has been subtracted from the reporting numerator in the sample calculation.

SAMPLE CALCULATIONS:

Reporting Rate=

$$\frac{\text{Performance Met (a=4 patients) + Performance Not Met (b=3 patients)}}{\text{Eligible Population / Denominator (d=8 patients)}} = \frac{7 \text{ patients}}{8 \text{ patients}} = 87.50\%$$

Performance Rate=

$$\frac{\text{Performance Met (a=4 patients)}}{\text{Reporting Numerator (7 patients)}} = \frac{4 \text{ patients}}{7 \text{ patients}} = 57.14\%$$